

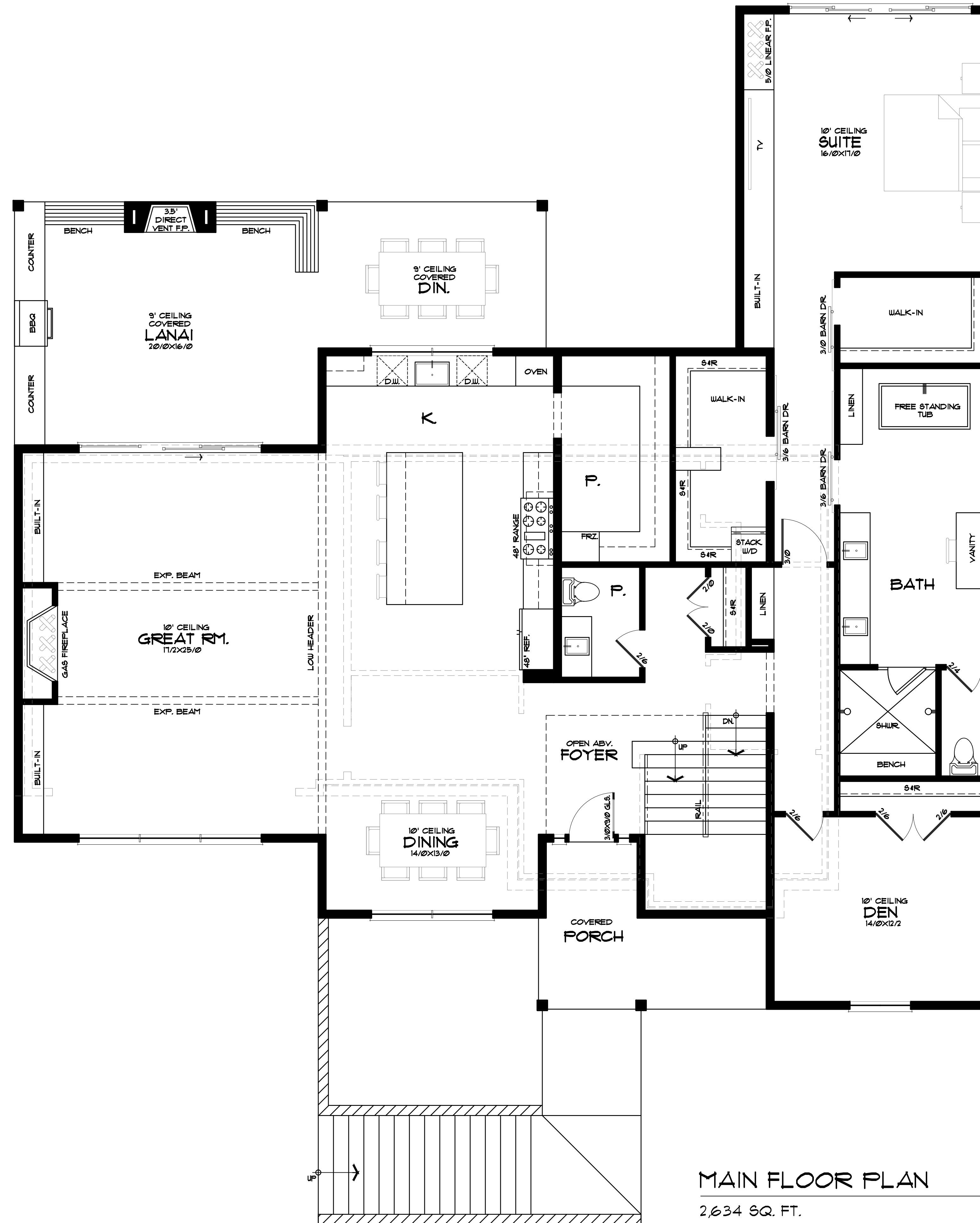
Lower Floor: 745 SQ FT
 Main Floor: 2,634 SQ FT
 Upper Floor: 1,396 SQ FT
 + Back Structure: 1,178 SQ FT

Total Area: 4,775 living space + 1,178 back structure = 5,953 SQ FT

LOWER FLOOR PLAN

745 SQ. FT.

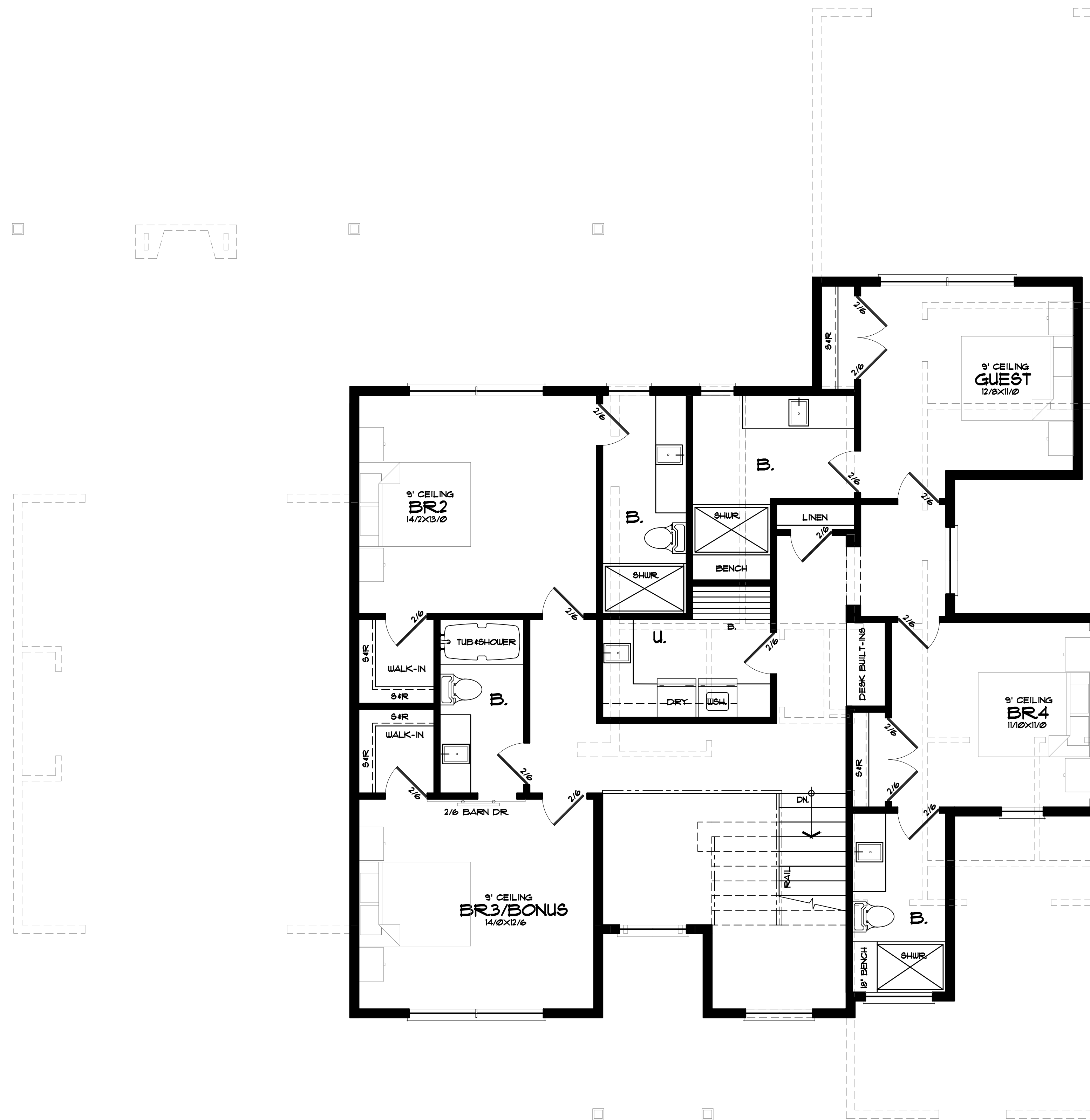
1/4" = 1'-0"



MAIN FLOOR PLAN

2,634 SQ. FT.

1/4" = 1'-0"



UPPER FLOOR PLAN

1,396 SQ. FT.

1/4" = 1'-0"

14655 UPLANDS DR.
LAKE OSWEGO, OR

FOR MARKETING PURPOSES ONLY
DIMENSIONS MAY VARY

